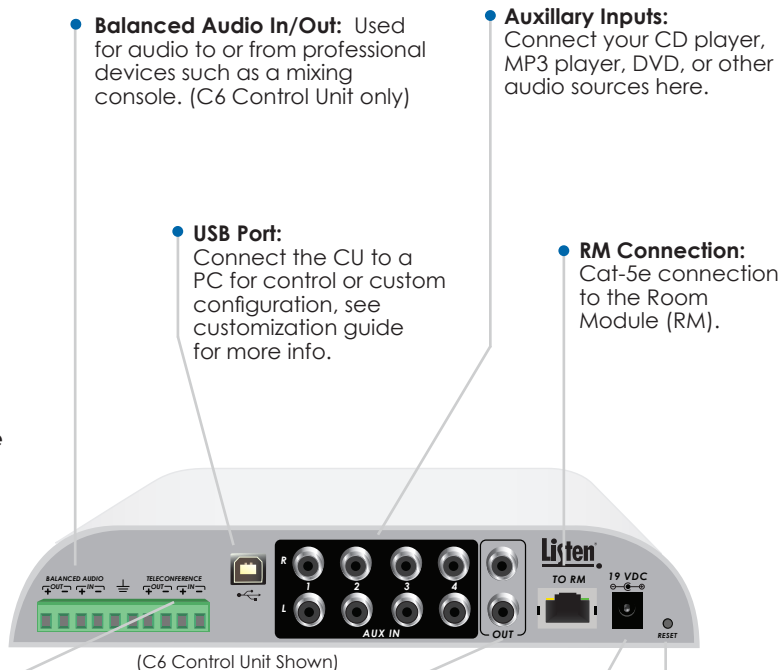
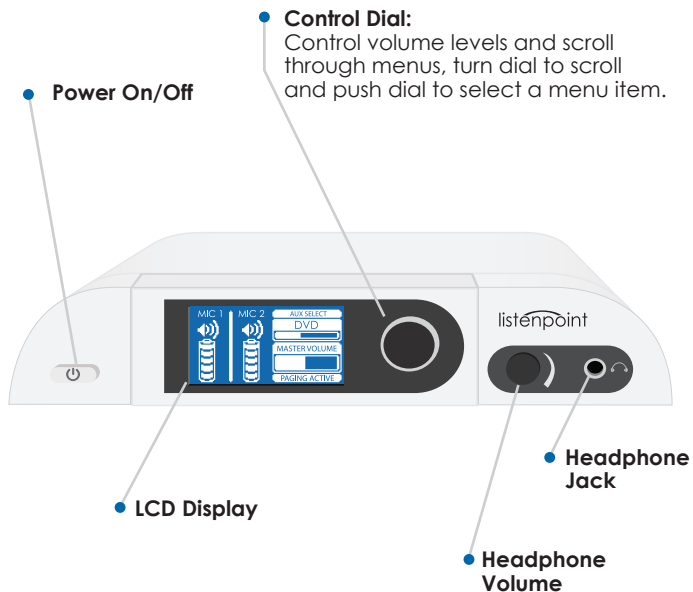


# ListenPoint® Control Unit Quick Reference



**Teleconferencing In/Out:**  
Connect to VOIP or audio conferencing system, see installation guide for more info. (C6 Control Unit only)

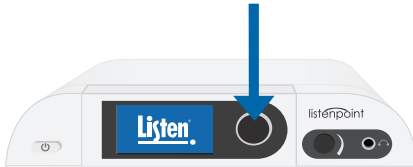
**Line Out/ALS Out:**  
Use to send a recording feed or to an Assistive Listening output.

# ListenPoint® Customization Quick Reference

## Control Unit Customization - Two Ways

### Directly on LCD Display on Control Unit:

Press and hold rotary knob to enter customization mode.

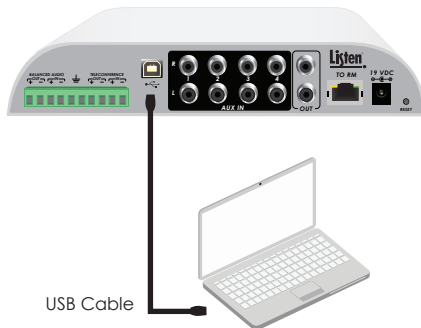


Customization Screen

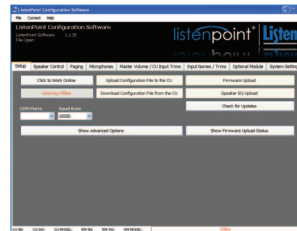


### Via ListenPoint Software:

Download ListenPoint Software at:  
[www.listentech.com/support-tools-downloads](http://www.listentech.com/support-tools-downloads)

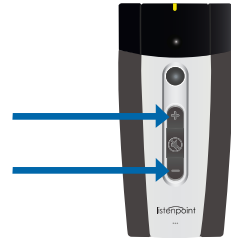


Software Customization Screen



## M1 Microphone/Media Interface Customization

For certain M1 customizations, you must simultaneously press the UP and DOWN buttons while the M1 is connected to the ListenPoint system, the yellow LED will flash.



## Detailed Customization

For more detailed customization options for both the Control Unit and M1, download the ListenPoint Customization Guide at:

[www.listentech.com/support-tools-downloads](http://www.listentech.com/support-tools-downloads)

or contact Listen at:

+1.801.233.8992 • 1.800.330.0891 North America

The user is cautioned that any changes or modifications not expressly approved by the party responsible for compliance could void the user's authority to operate the equipment.

