

---

## Sharing an Internet Connection to Connect to Cloud Services

### Overview:

The purpose of this tech note is to provide an alternate means of connecting a Listen Everywhere (LE) server to Cloud Services. Cloud Services offers in-app marketing features including banner ads & promotional videos, web-based remote setup & maintenance, and advanced customization. If an account has not been created, you may register for an account [here](#).

When there is no option to connect an LE server to a network router or switch, you can bridge a computer's Internet connection with its wireless adapter and share the connection with the LE server through an Ethernet adapter. This will allow the LE server to communicate with LE Cloud Services. Below are steps outlined on how to accomplish this in a Microsoft Windows or Apple macOS environment.

The instructions outlined below work best on a network with little to no security. If a firewall is enabled to block specific ports and services, refer to the [Network Configuration Guide](#) for port forwarding considerations.

### Required Products:

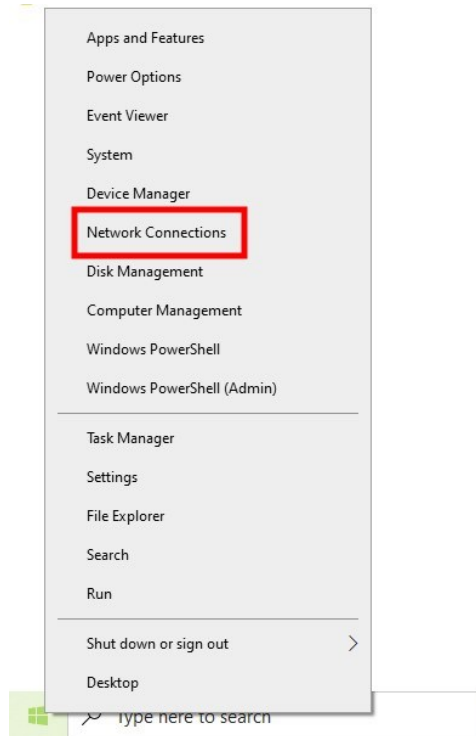
- Listen Everywhere Server: LW-100P or LW-200P
- Laptop or desktop with Windows (8 or later) or macOS (High Sierra and later) with:
  - A Wi-Fi adapter
  - An Ethernet adapter or USB Ethernet adapter
- Ethernet cable
- Connection to a wireless network

### Sharing an Internet Connection on Windows (8 or 10):

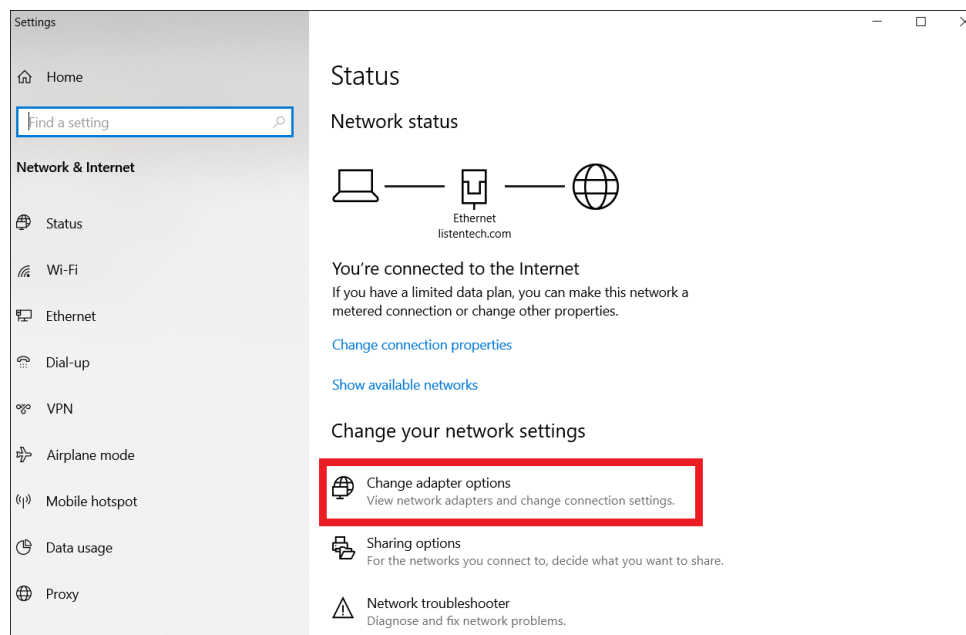
To configure a wireless adapter to share an internet connection through an Ethernet adapter, use the following steps:

1. Ensure the LE server is currently powered-off.

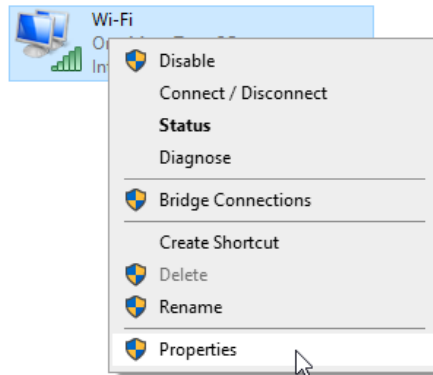
2. Right-click on the Windows Start Menu (⊞) and select **Network Connections**.



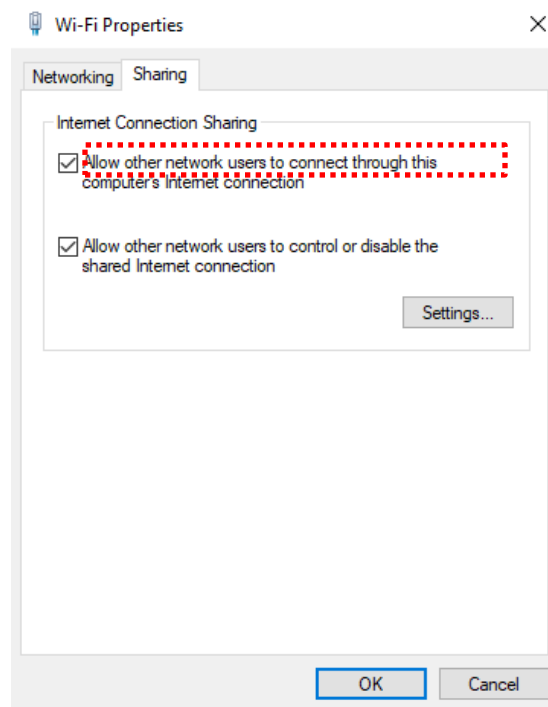
3. Under *Change your network settings*, click on **Change adapter options**.



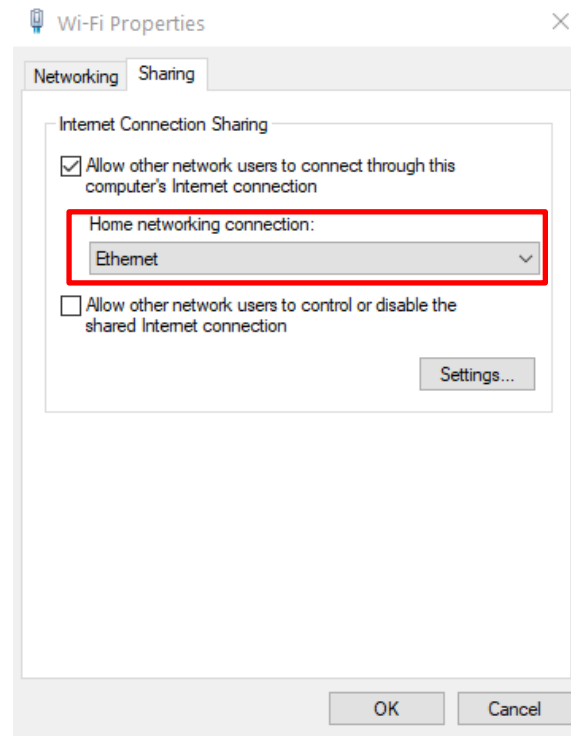
- Right-click on your Wi-Fi adapter and select **Properties**. A User Account Control prompt may appear. Select **Yes** and enter in the administrator account password, if prompted.



- Select the **Sharing** tab.
- Check the box for **Allow other network users to connect through this computer's Internet connection**.
- Select the appropriate Ethernet adapter:
  - If there is only one Ethernet adapter / no other adapters available, proceed to Step 7.



- b. If you have multiple Ethernet adapters, select the correct adapter under the *Home networking connection* drop-down list



8. Select **OK** to save the changes.
9. Your wireless connection will now be shared with your Ethernet adapter. Proceed to the *Connecting the Listen Everywhere Server to Cloud Services* section to connect your LE server to Cloud Services.

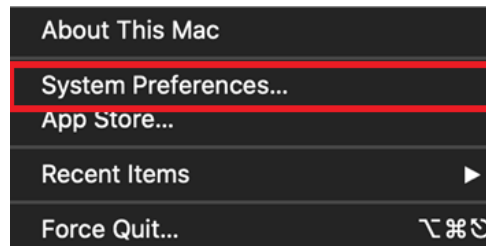
*Note: If you are unable to successfully bridge a connection, it is likely that the wireless connection is automatically being disabled when a device is plugged into the Ethernet port. This must be resolved within the BIOS menu of your computer. These steps may vary. Please reach out to the manufacturer of your computer for assistance.*


### **Sharing an Internet Connection on macOS:**

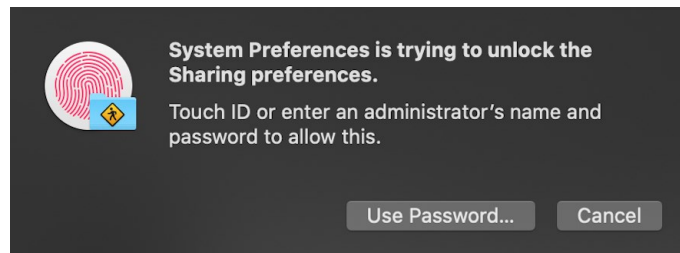
To configure your wireless adapter to share your internet connection through your Ethernet adapter, use the following steps:

1. Ensure the LE server is currently powered-off.

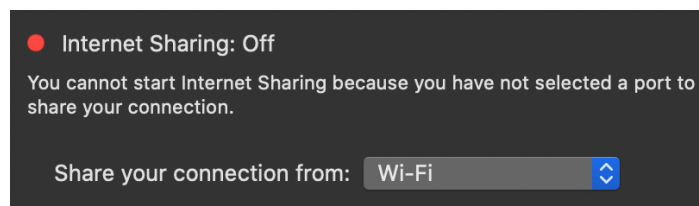
2. On the Mac, in the upper-left corner select the Apple menu () > System Preferences.



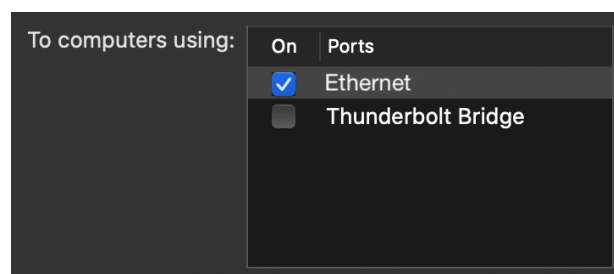
3. Select **Sharing**. 
4. If you are not logged into an administrator account upon opening *Sharing*, check the lock icon on the bottom-left corner of the window. If it is locked, click on the lock, and enter in your administrator password. If you are logged in as an administrator, skip this step.



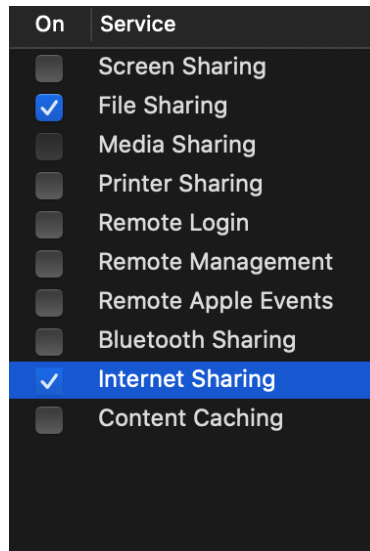
5. Select **Internet Sharing**.
6. Under the *Share your connection from* drop-down list, select **Wi-Fi**.



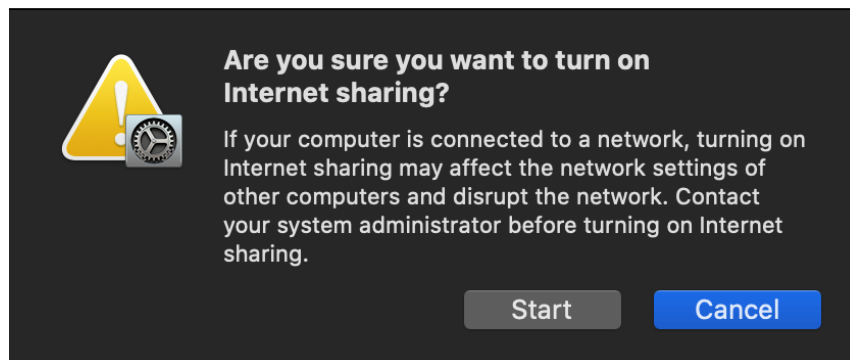
7. In the *To computers using* list, check the box next to **Ethernet**.



8. In the left pane, check the box next to **Internet Sharing**.



9. A notification will pop up asking if you want to turn on Internet sharing. Select **Start**.

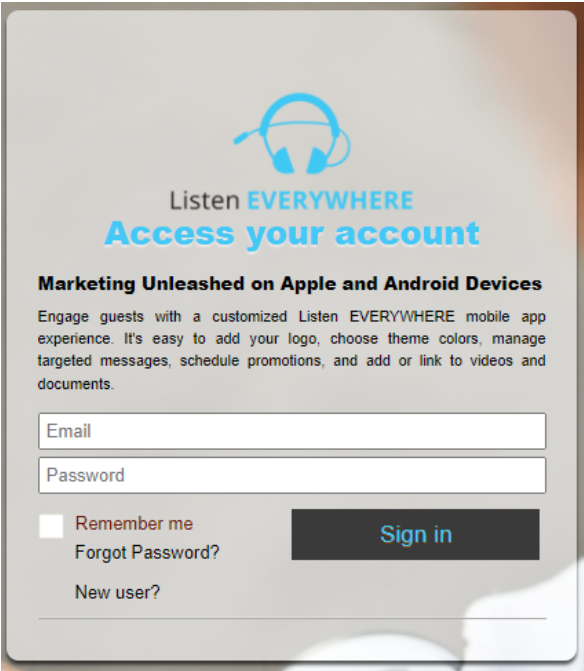


10. Your wireless connection will now be shared with your Ethernet adapter. Proceed to the *Connecting the Listen Everywhere Server to Cloud Services* section to connect your LE server to Cloud Services.

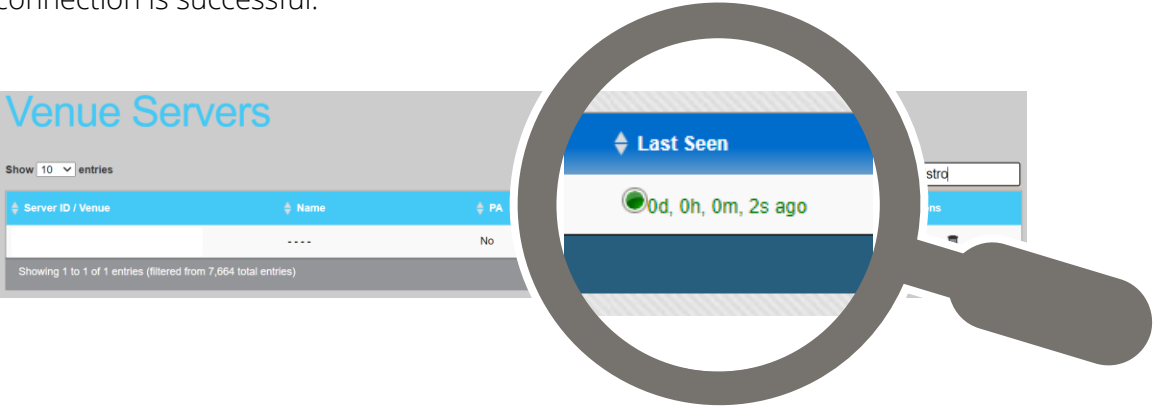
### **Connecting the Listen Everywhere Server to Cloud Services:**

1. Connect an Ethernet cable from the LE server into the desktop's/laptop's Ethernet port.
2. Plug in the LE server with the included power supply. The unit should power on automatically. If not, turn on the LE server using the power button located on the front panel. The blue LED on the power button will flash for approximately 20 - 45 seconds before becoming solid. Once the LED is solid, the server is initialized.

- 3. Navigate to the Cloud Services page (<http://services.listeneverywhere.com>) on your computer or laptop. Simply log in to customize your LE server.



- 4. To verify that the connection was successful, use the menu located on the left-hand side and navigate to **Venue Server & Labels > Venue Servers List**.
- 5. The timestamp under the *Last Seen* column will appear **green**. This signifies that the connection is successful.



Should you have any further questions, please feel free to contact Listen Technologies' Technical Services team at 1-800-330-0891 or [support@listentech.com](mailto:support@listentech.com) for further assistance.