

ListenTALK LK-1 Talkback Modes

Overview:

The purpose of this tech note is to discuss the various Talkback modes used with the ListenTALK transceiver and to assist in exploring the best configuration for one's application needs. Talkback refers to the ability for Participants to communicate with the Leader. The Talkback mode is controlled by the Leader of a group to dictate the speech functionality of the Participants. This option can be toggled so that Participants are either (1) unable to communicate with anybody, (2) are only able to communicate to the Leader, or (3) are able to communicate to everyone in the group.

ListenTALK Unit Types:

When it comes to Talkback modes, the Leader, Sub-Leader, and Participant have different functionalities. Please see the descriptions below for each unit's abilities and limitations.

Leader: The Leader unit is the only unit that can control the conversation in a group. Using the Left Soft Button, the Leader can cycle through the Talkback modes. The microphone will always be open unless the center Talk Button is pressed once. This will toggle between being muted and unmuted.



Left Soft Button:
Toggles Talkback Modes

Sub-Leader: The Sub-Leader cannot change Talkback Modes. However, they can speak to a group similar to a Leader unit. The center Talk Button will need to be pressed once to utilize the microphone. This will toggle between being muted and unmuted. The Sub-Leader may also override a Participant or Sub-Leader by toggling the microphone in certain broadcast modes (refer to the "Talkback Modes" section for further details on the different broadcast functions).



Left Soft Button:
No function

Participant: Participant units are unable to control any aspect of the Talkback mode functionality. If Talkback Mode is enabled, the center Talk Button will need to be held down to utilize the microphone.



Left Soft Button:
No function

Talkback Modes:

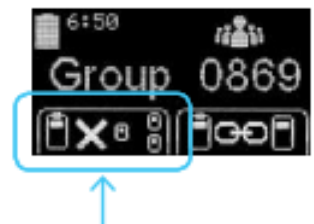
The ListenTALK system allows the Leader to control the flow of conversation based upon the individual needs of the group. Press and release the Leader's Left Soft Button to toggle among the three Talkback Modes which are Off/Listen-only Mode, Leader/Respond Mode, and Group/Discuss Mode.

These modes function differently based on the Leader's setting of "Sub-Leader Always Broadcast" (Default is enabled). The setting of Sub-Leader Always Broadcast mode can only be disabled via ListenTALK Software Suite (see steps in section "Enabling/Disabling Sub-Leader Always Broadcast").

The Leader's Graphic Display indicates Talkback Mode (see below). During Talkback Mode only one Participant or Sub-Leader can speak at a time with the Leader.

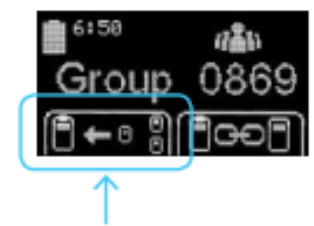
Off / Listen-only Mode – Leader's Display has an X but No Arrows
Sub-Leader Always Broadcast Enabled – Leader and Sub-Leaders communicate with one another and broadcast to Participants, but Participants cannot respond.

Sub-Leader Always Broadcast Disabled – Leader can broadcast to Participants and Sub-Leaders, but participants and Sub-Leaders cannot respond.

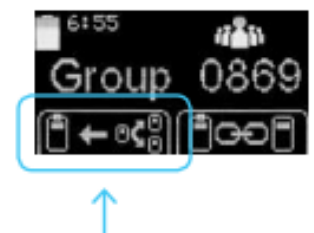


Leader / Respond Mode – Leader's Display has Left Arrow
Sub-Leader Always Broadcast Enabled - Leader and Sub-Leaders communicate with one another and broadcast to Participants but Participants can only pose a question to the Leader. Sub-Leaders must release the Talkback channel to allow Participants to pose a question.

Sub-Leader Always Broadcast Disabled – Leader can broadcast to Participants and Sub-Leaders, but Participants and Sub-Leaders can only pose a question to the Leader. Sub-Leaders must release the Talkback channel to allow Participants to pose a question.



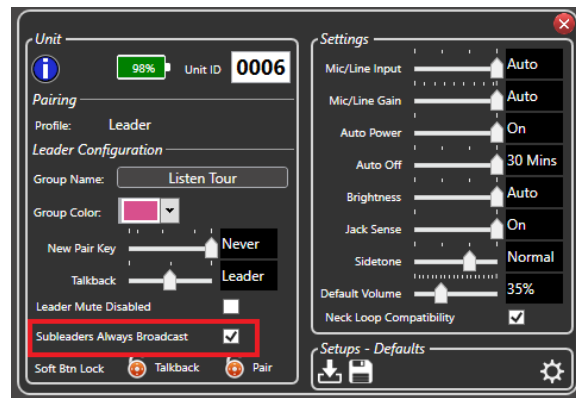
Group / Discuss Mode – Leader's Display has Left and Right Arrows
Participants and Sub-Leaders can listen and respond to the Leader and other Group members. Group / Discuss Mode functions the same regardless of the setting of "Sub-Leader Always Broadcast". Sub-Leaders must release the Talkback channel to allow Participants to pose a question.



Enabling/Disabling Sub-Leader Always Broadcast:

The Sub-Leader Always Broadcast mode can only be changed using the ListenTALK software suite with the following steps:

1. Download and install the software suite located [here](#).
2. Connect the Leader unit to the computer via [USB to micro USB cable](#) or via the [ListenTALK docking station](#).
3. Click on the Leader unit, then click on the box next to "Subleaders Always Broadcast" (see picture on the right).



Talkback Icon Guide:



If Talkback Mode is enabled: When utilizing Talkback, the Participant or Sub-Leader will see the microphone icon with wireless transmission symbols on the left and right sides of the microphone. A double-beep confirmation tone will be heard in the user's headset.




If Talkback Mode is enabled but Talkback is being used by another Participant or Sub-Leader: Only one Participant or Sub-Leader may speak at any given time. If the Participant attempts Talkback, they will see a microphone icon with a slash through it along with an hourglass icon on the bottom right. A triple-beep rejection tone will be heard in the user's headset.

Note: Sub-Leaders will not encounter this. Sub-Leader Talkback can override both Participant units and Sub-Leader units.



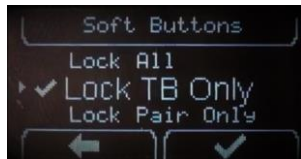
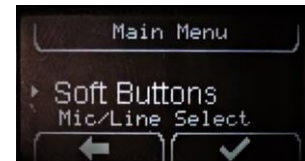
If Talkback Mode is disabled: When attempting Talkback, the Participant or Sub-Leader will see a microphone icon with a slash through it along with an "X" on the bottom right of the screen. A triple-beep rejection tone will be heard in the user's headset.

Note: Sub-Leaders will only see this if "Sub-Leader Always Broadcast" is disabled. Otherwise, they will see an enabled microphone icon: 

Locking the Talkback Soft Button:

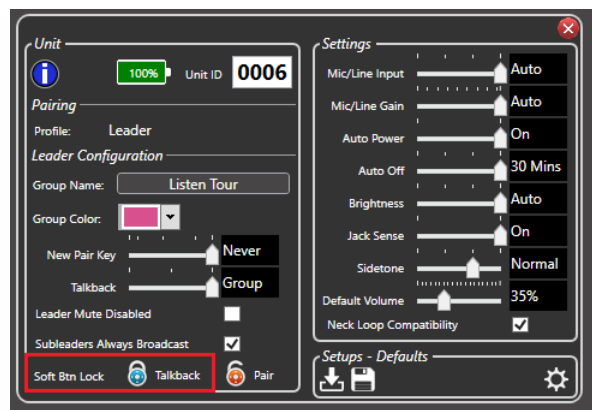
Disabling the use of the Talkback Soft Mode Button may be needed for certain groups. Locking the Soft Button will ensure that a Leader is unable to change the Talkback mode, whether intentional or by accident. There are two ways to perform this:

1. Through the ListenTALK programming menu
 - a. **Access the programming menu on the Leader unit:** Ensure that the Leader unit is turned on. Then, simultaneously press and hold the Power Button and Volume Down Button for about three seconds. This will access the programming menu.
 - b. **Navigate to "Soft Buttons":** This should already be the first option. Use the Right Soft Button (check mark) to open this menu.
 - c. **Lock the Talkback soft button:** Scroll through the



menu with the Volume Up and Down Buttons. Once the option "Lock TB Only" is selected, use the Right Soft Button (check mark) to confirm. Press the Power Button to save these settings.

2. Through the software suite
 - a. Download and install the software suite located [here](#).
 - b. Connect the Leader unit to the computer via [USB to micro USB cable](#) or via the [ListenTALK docking station](#).
 - c. Click on the Leader unit, then click on the lock icon next to "Talkback" in the "Soft Btn Lock" section (see picture on the right).



Should you have any further questions or concerns, please contact Listen Technologies' technical services team at 801.233.8992 or support@listentech.com for further assistance.